

### Box Properties

*--Description--*

Name: 1x18 sub comparison

Type: Vented Box

Shape: Prism, square

*--Box Parameters--*

Vb = 158,2 liters

V(total) = 174,3 liters

Fb = 42, Hz

F3 = 40,32 Hz

Fill = minimal

*--Vents--*

No. of Vents = 1

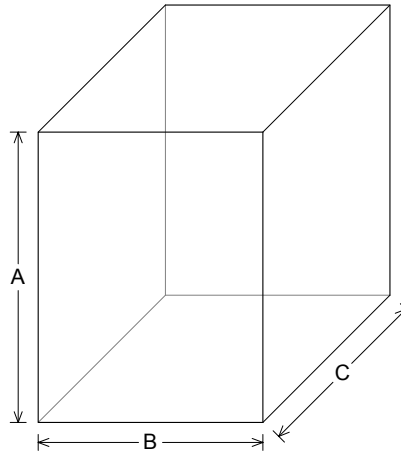
Vent shape = rectangle

Vent ends = one flush

Hv = 90, mm

Wv = 430, mm

Lv = 282,9 mm



*--External Dimensions--*

A = 706, mm

B = 546, mm

C = 583, mm

*--Internal Dimensions--*

A = 670, mm

B = 510, mm

C = 510, mm

*--Wall Thickness--*

Front = 55, mm

Side = 18, mm

### Driver Properties

*--Description--*

Name: Ps18/300

Type: Standard one-way driver

Company: Volt Loudspeakers Ltd.

Suspension: Dual rear suspension

Frame: Black painted pressed steel

Voice Coil: 75 mm, 4 layer copper

Terminals: 5 mm solder

Magnet: 8.1 kg

*--Configuration--*

**No. of Drivers = 1**

*--Driver Parameters--*

Fs = 31, Hz

Qms = 2,3

Vas = 243, liters

Xmax = 2,7 mm

Sd = 1075 sq.cm

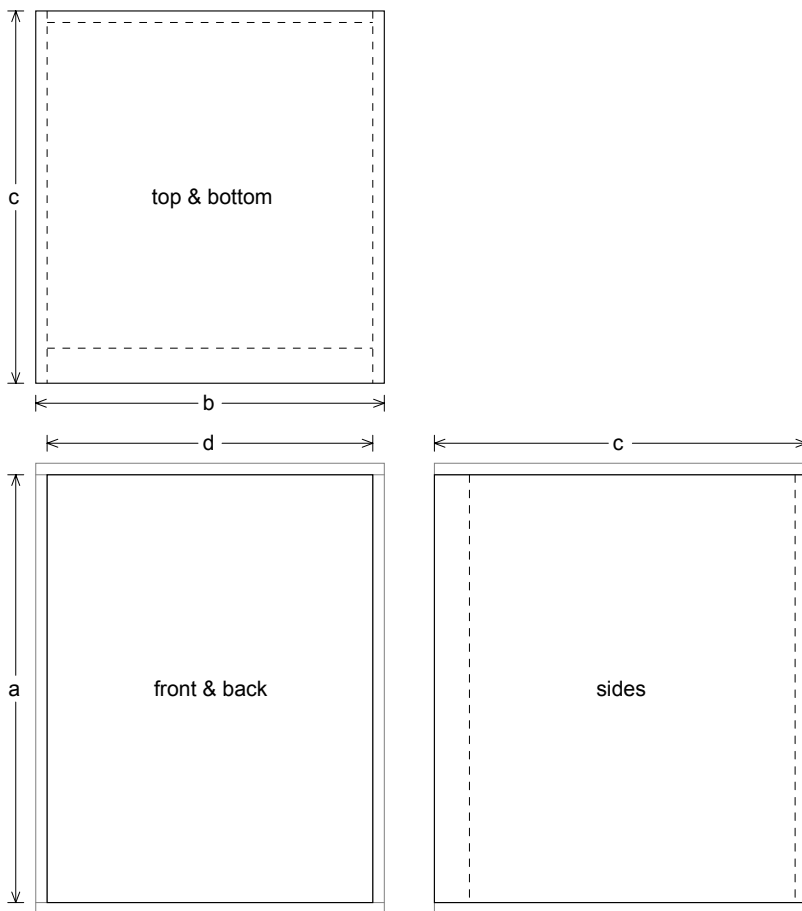
Qes = 0,33

Re = 5,9 ohms

Le = 1,1 mH

Z = 8, ohms

Pe = 300, watts



**Box Parts**

Box Shape: Square Prism

1 Top, 1 Bottom: depth (c) = 583, mm  
width (b) = 546,, thickness = 18, mm

1 Front: height (a) = 670, mm

width (d) = 510,, thickness = 55, mm

1 Back: height (a) = 670, mm

width (d) = 510,, thickness = 18, mm

2 Sides: height (a) = 670, mm

depth (c) = 583,, thickness = 18, mm

--Driver Mounting--

Mounting: Flush

--Vent Parts--

1 Top, 1 Bottom:

width (e) = 430,, length (h) = 282,9 mm  
thickness = 3,175 mm

2 Sides:

height (g) = 96,35, length (h) = 282,9 mm  
thickness = 3,175 mm

