

Box Properties

--Description--

Name: CAD 181N

Type: Vented Box

Shape: Prism, square

--Box Parameters--

Vb = 163,3 liters

V(total) = 174, liters

Fb = 44, Hz

F3 = 44,87 Hz

Fill = minimal

--Vents--

No. of Vents = 1

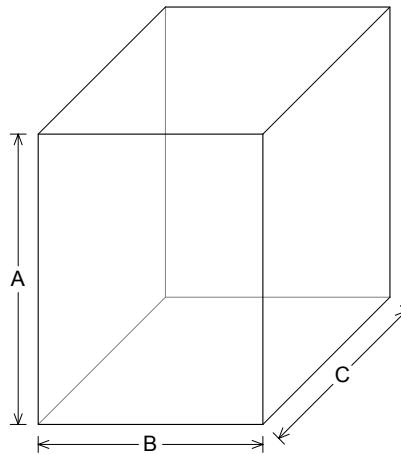
Vent shape = rectangle

Vent ends = one flush

Hv = 90, mm

Wv = 430, mm

Lv = 232,2 mm



--External Dimensions--

A = 706, mm

B = 546, mm

C = 583, mm

--Internal Dimensions--

A = 670, mm

B = 510, mm

C = 510, mm

--Wall Thickness--

Front = 55, mm

Side = 18, mm

Driver Properties

--Description--

Name: PD 184

Type: Standard one-way driver

Company: Precision Devices Ltd.

Piston: Curvilinear smooth paper

Suspension: Fabric

Dust Cap: Paper

Voice Coil: Copper, diameter- 101 mm

Terminals: Spring loaded push button

Magnet: Ceramic, 3.5 Kg

--Configuration--

No. of Drivers = 1

--Driver Parameters--

Fs = 27, Hz

Qms = 9,6

Vas = 473, liters

Xmax = 8, mm

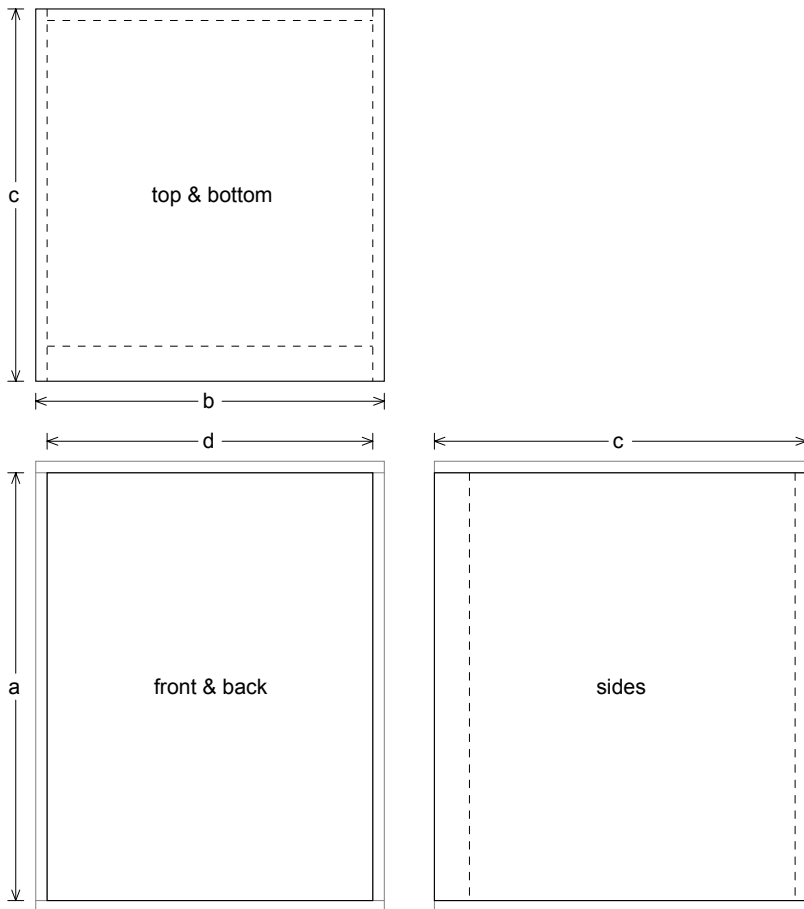
Sd = 1150 sq.cm

Qes = 0,26

Re = 5,9 ohms

Z = 8, ohms

Pe = 400, watts



Box Parts

Box Shape: Square Prism

1 Top, 1 Bottom: depth (c) = 583, mm
width (b) = 546,, thickness = 18, mm

1 Front: height (a) = 670, mm

width (d) = 510,, thickness = 55, mm

1 Back: height (a) = 670, mm

width (d) = 510,, thickness = 18, mm

2 Sides: height (a) = 670, mm

depth (c) = 583,, thickness = 18, mm

--Driver Mounting--

Mounting: Flush

--Vent Parts--

1 Top, 1 Bottom:

width (e) = 430,, length (h) = 232,2 mm
thickness = 3,175 mm

2 Sides:

height (g) = 96,35, length (h) = 232,2 mm
thickness = 3,175 mm

