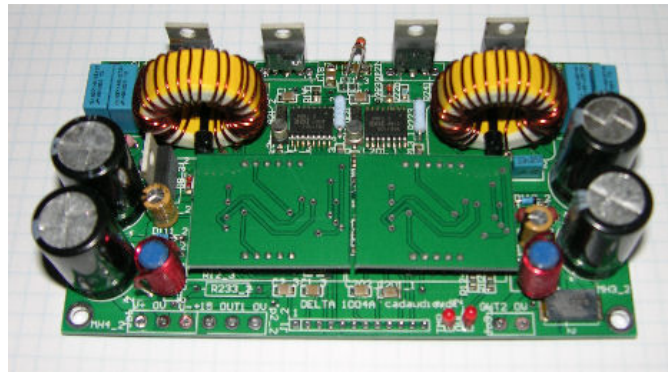


## DELTA 504A2 PWM Amplifier



DELTA 504A2 is a class-d power amplifier.

DELTA 504A2 is new amplifier in our DELTA range of amplifiers, a new topology combining the best of analog amplifier design with class-d/switching amplifiers.

DELTA 504A2 offers a versatile and compact solution for many applications in the audio field.

DELTA 504A2 is rated at 500W into 4 ohms (stereo) or 1000W into 8 ohms (mono) and has several means of protecting the amplifier and the load, overcurrent protection, thermal overload protection, soft-start etc. etc.

The DELTA range of amplifiers offer very high audio quality with very good specs, stability and square wave reproduction, EMI and noise is very good as well.

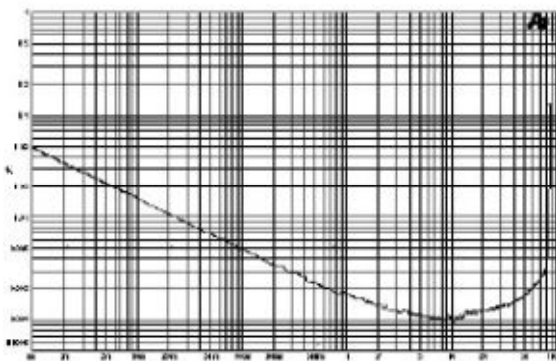
Amplifier specification	
Rated power 4 ohms stereo	500 W
Rated power 8 ohms mono	1000 W
Power supply	2 x 70VDC (+ 18V)
Freq. Range (+0, -1dB)	15 – 30.000 Hz
THD + N	0.02% typ.
Dynamic Range	110 dB typ.
Max. output current	35A
Min. load impedance	4 ohms stereo / 8 ohms mono
Damping Factor	400 typ.
Input voltage	1V - 10 k balanced/unbalanced
Operation	2 CH Half bridge amplifier
Overload protection, thermal protection	Yes , yes
Dimensions	126 x 73 x 30mm
Heatsink	External

**DELTA 504A2 PWM Amplifier****Header specifications.**

Power Input	
1	+70V
2	GND
3	-70V
4	(+18VDC)

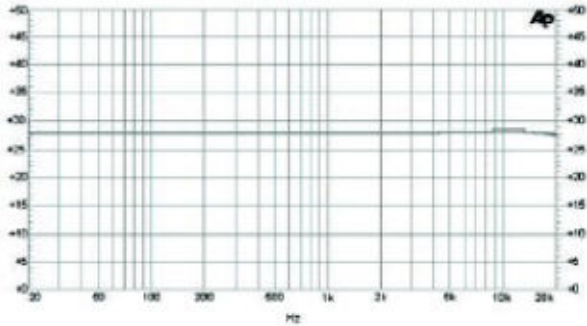
Speaker Outputs	
1	+ Out CH1 / + out mono
2	-Out CH1
3	+OUT CH2 / - out mono
4	-OUT CH2

Inputs	
1	+IN CH1
2	-IN CH1
3	GND
4	VOL SEND CH1
5	VOL RET CH1
6	GND
7	+IN CH2
8	-IN CH2
9	GND
10	VOL SEND CH2
11	VOL RET CH2
12	GND

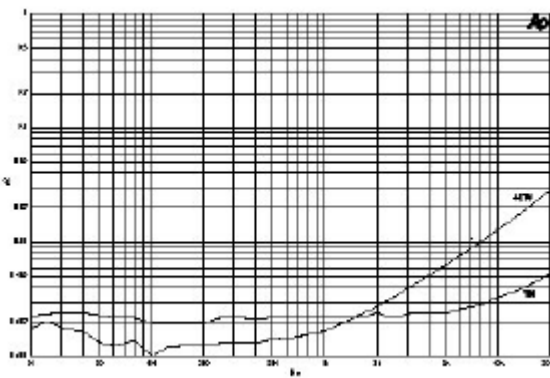
**Performance Graphs**

THD vs. Power Output , STEREO 4 ohms

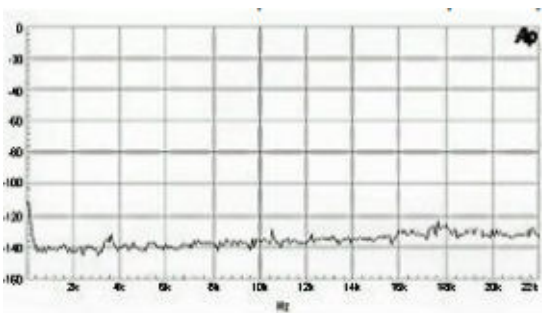
## DELTA 504A2 PWM Amplifier



Freq Response 4 ohms stereo



THD + N vs. Frequency – 4 ohms



Noise floor,