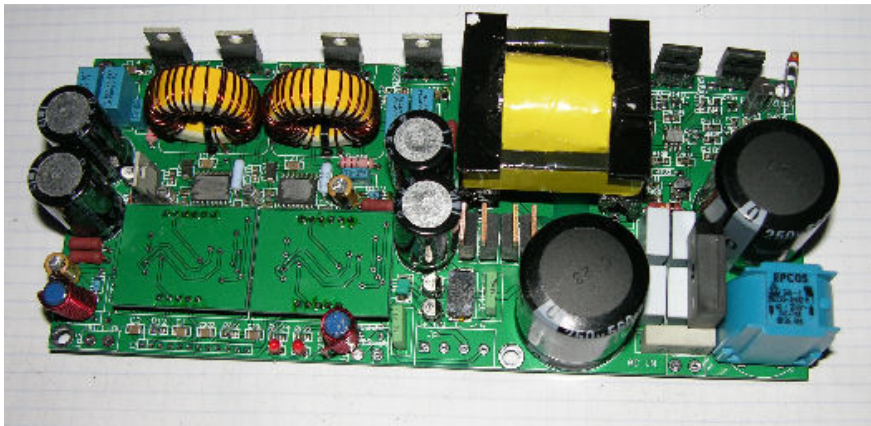


DELTA 502ASW2 PWM Amplifier + SMPS



DELTA 502ASW2 is a 2-channel class-d power amplifier with on-board switch-mode power supply.

DELTA 502ASW2 is new amplifier in our DELTA range of amplifiers, a new topology combining the best of analog amplifier design with class-d/switching amplifiers.

DELTA 502ASW2 offers a versatile and compact solution for many applications in the audio field.

DELTA 502ASW2 is rated at 500W into 2 ohms (2 channels) or 1000W into 4 ohms (mono) and has several means of protecting the amplifier and the load, overcurrent protection, thermal overload protection, soft-start etc. etc.

The DELTA range of amplifiers offer very high audio quality with very good specs, stability and square wave reproduction, EMI and noise is very good as well.

Amplifier specification	
Rated power 2 ohms stereo	500 W
Rated power 4 ohms mono	1000 W
Power supply	110 to 240V AC
Aux. Supplies outputs	+18V
Freq. Range (+0, -1dB)	15 – 30.000 Hz
THD + N	0.02% typ.
Dynamic Range	110 dB typ.
Max. output current	30A
Min. load impedance	8 ohms
Damping Factor	400 typ.
Input voltage	1V - 10 k balanced/unbalanced
Operation	Half bridge amplifier with smps
Overload protection, thermal protection	Yes , yes
Dimensions	200 x 85 x 40mm
Heatsink	External

DELTA 502ASW2 PWM Amplifier + SMPS

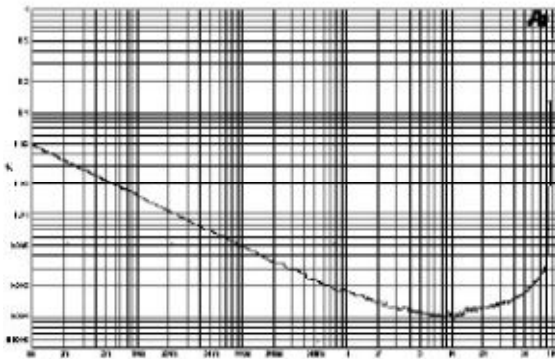
Header specifications.

Power Input	
1	AC Live
2	AC Neutral

Speaker Outputs	
1	+ Out CH1 / + out mono
2	-Out CH1
3	+ Out CH2/- out mono
4	-Out CH2

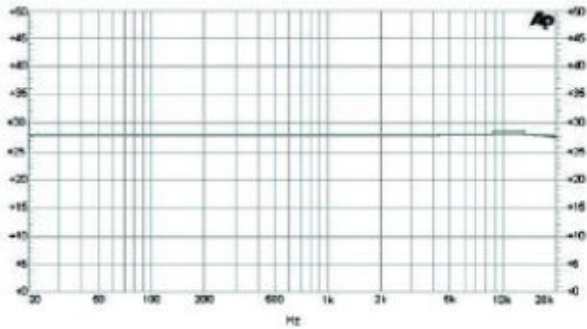
Inputs	
1	+IN CH1
2	-IN CH1
3	GND
4	VOL SEND CH1
5	VOL RET CH1
6	GND
7	+IN CH2
8	-IN CH2
9	GND
10	VOL SEND CH2
11	VOL RET CH2
12	GND

Performance Graphs

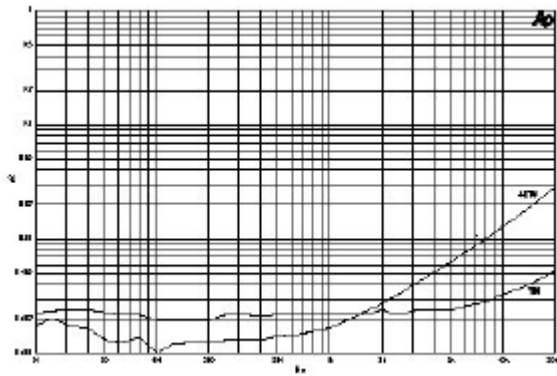


THD vs. Power Output , SE 8 ohms

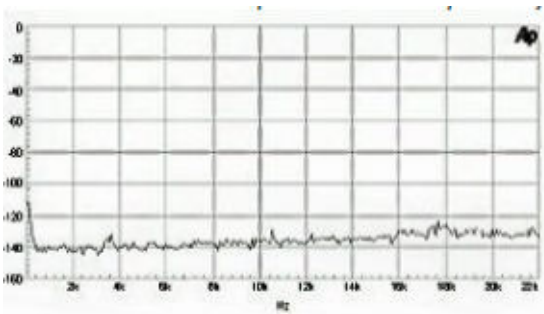
DELTA 502ASW2 PWM Amplifier + SMPS



Freq Response 2 ohms stereo /4 ohms mono



THD + N vs. Frequency – 4 ohms



Noise floor,