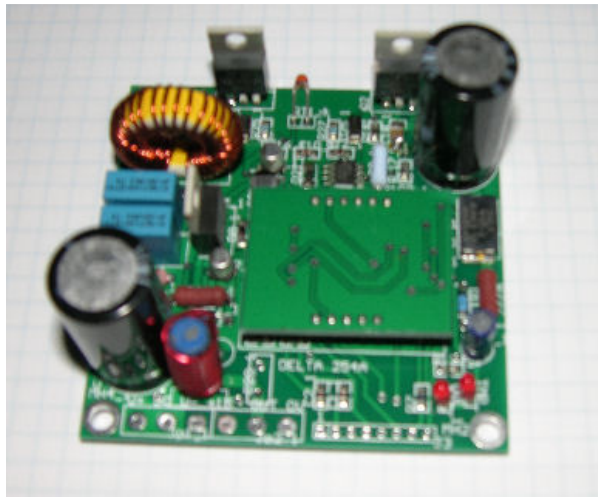


DELTA 254A PWM Amplifier



DELTA 254A is a class-d power amplifier.

DELTA 254A is new amplifier in our DELTA range of amplifiers, a new topology combining the best of analog amplifier design with class-d/switching amplifiers.

DELTA 254A offers a versatile and compact solution for many applications in the audio field.

DELTA 254A is rated at 250W into 4 ohms and has several means of protecting the amplifier and the load, overcurrent protection, thermal overload protection, soft-start etc. etc.

The DELTA range of amplifiers offer very high audio quality with very good specs, stability and square wave reproduction, EMI and noise is very good as well.

Amplifier specification	
Rated power 4 ohms	250 W
Power supply	2 x 45VDC (+ 18V)
Freq. Range (+0, -1dB)	15 – 30.000 Hz
THD + N	0.02% typ.
Dynamic Range	110 dB typ.
Max. output current	20A
Min. load impedance	4 ohms
Damping Factor	400 typ.
Input voltage	1V - 10 k balanced/unbalanced
Operation	Half bridge amplifier
Overload protection, thermal protection	Yes , yes
Dimensions	81 x 73 x 30mm
Heatsink	External

DELTA 254A PWM Amplifier

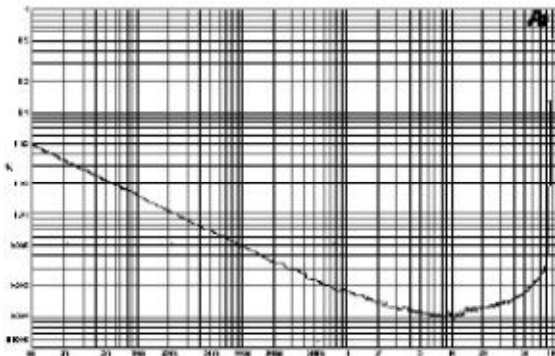
Header specifications.

Power Input	
1	+45V
2	GND
3	-45V
4	(+18VDC)

Speaker Outputs	
1	+ Out CH1
2	-Out CH1

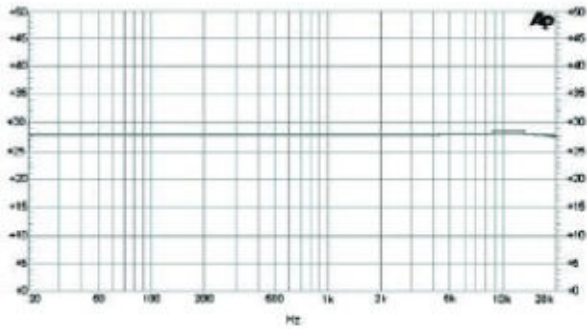
Inputs	
1	+IN
2	-IN
3	GND
4	VOL SEND
5	GND
6	VOL RETURN
7	INV INPUT
8	INV OUTPUT

Performance Graphs

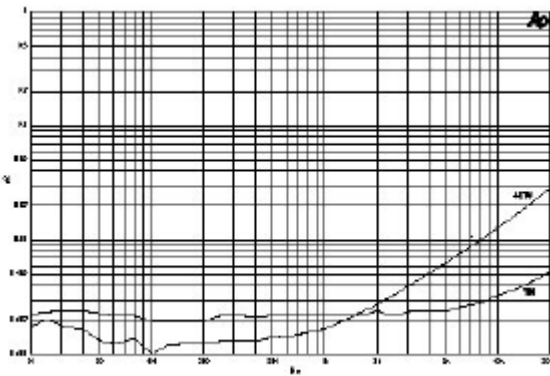


THD vs. Power Output , SE 4 ohms

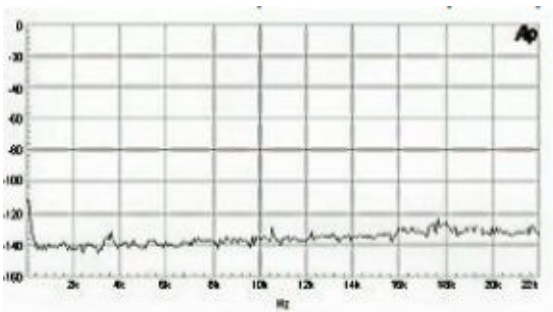
DELTA 254A PWM Amplifier



Freq Response 4 ohms



THD + N vs. Frequency – 4 ohms



Noise floor,