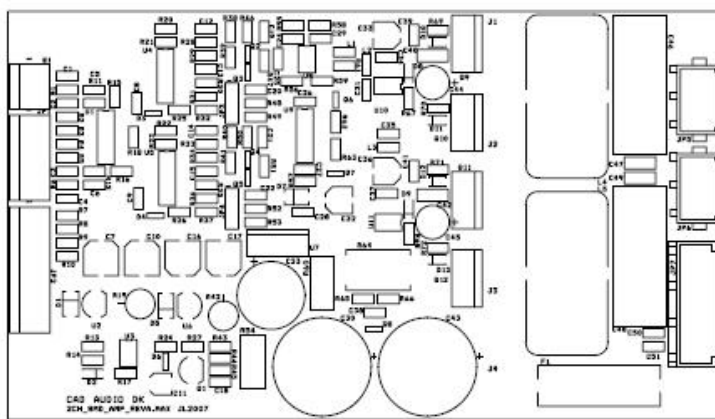




D500C2A PWM Amplifier



D500C2A specs

Rated power 4 ohms – 2 ch	2 x 500W
Rated power 8 ohms – mono	1 x 1000W
Power supply max.	2 x 65V DC
Aux. supply	16V DC
Freq. Range (+0, -1dB)	20 – 20.000 Hz
THD + N	0.02% typ.
Dynamic Range	110 dB typ.
Max. output current	20A
Min. load impedance	4 ohms
Damping Factor	400 typ.
Input voltage	1V - 10 k - balanced
Operation	2 ch Half bridge amplifier
DC-servo	yes
Peak limiter	yes
Dimensions	130 x 76 x 30mm
Heatsink	Optional
Available as sample	yes
Available as OEM design	yes

D500C2A is a PWM /Class-D amplifier designed to give very high performance in audio quality and to deal with all aspects of amplifier use and applications including amplifier + power supply combination, multichannel use , active crossover use, etc.

Power output is 2 x 500 W into 4 ohms or 1 x 1000W into 8 ohms , overcurrent protection is likely to operate with continuous high power levels into 1,6 ohms stereo or 3,2 ohms mono.

D500C2A is a full bandwidth module (20 kHz power bw) and can be used for a broad range of applications from HIFI, Home Cinema to Pro Audio, Active Speakers, Installation... Sound quality is very good indeed and THD + N is 0.02% or better.

The D500C2A can be powered from a linear supply or from a switch-mode supply .

D500C2A has these connections:

- * Balanced input header w. +/- 15V supply for preamp, crossover etc.
- * Volume control header.
- * Power input (4-pin connector) 2 x 50VDC + 15VDC
- * Speaker outputs

Connectors.

J1 - + out

J2 - -out

Power Input – JP7

1	+65V
2	GND
3	-65V
4	+16V _{flt}

Inputs – JP2

1	CH1 - IN
2	CH1 + IN
3	GND
4	GND
5	CH2 +IN
6	CH2 -IN
7	+15V
8	GND
9	-15V

Front Panel – JP1

1	CH1 To vol
2	CH1 From vol
3	GND
4	GND
5	CH2 From Vol
6	CH2 To Vol

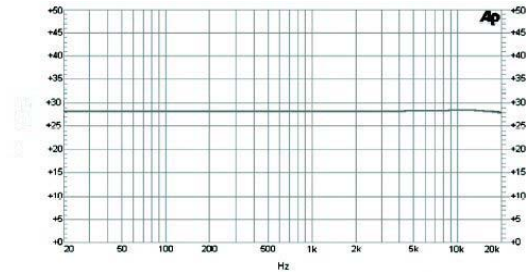
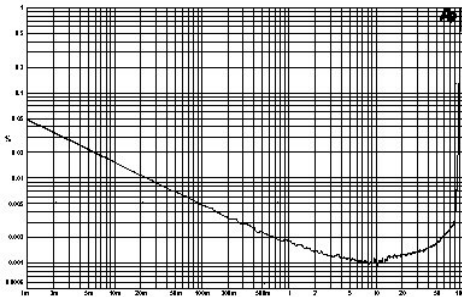
Speaker Output- CH1 - JP5

J1 - + out

J2 - -out

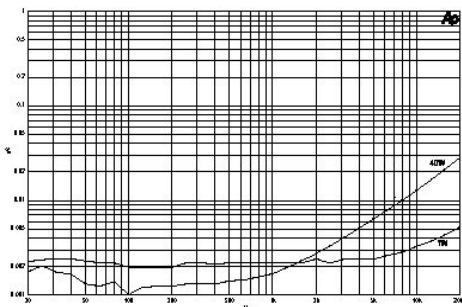
Speaker Output - CH2 -JP6

Performance Graphs.



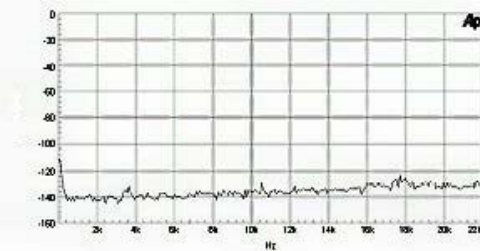
Frequency response – 8 ohms

THD vs. Power Output

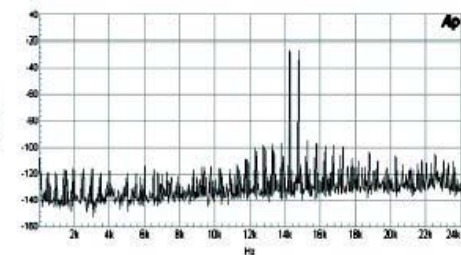


CCIF & IMD distortion – 14 kHz and 15 kHz

THD vs. Power Output and frequency



Noise Floor



CCIF & IMD distortion - 0 db= 400W

