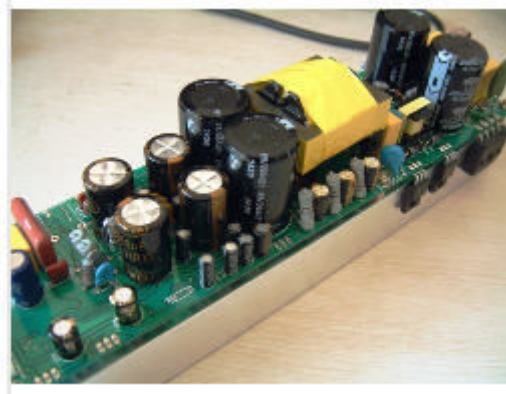
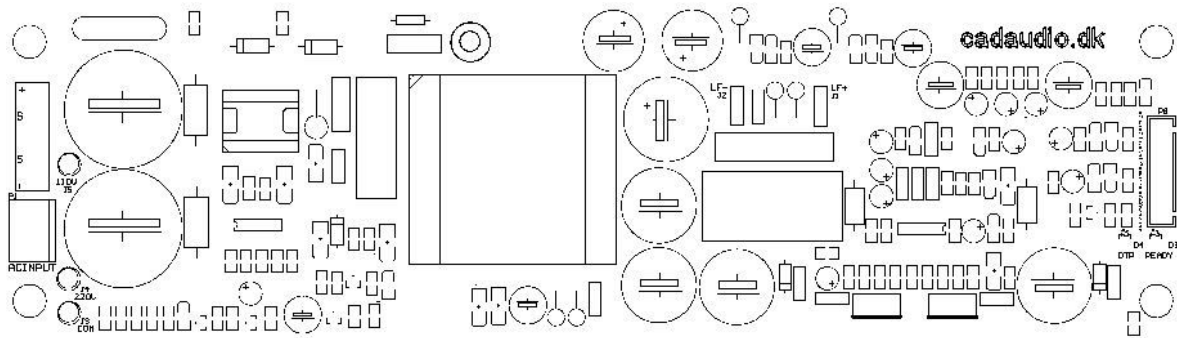


D450ASW2 PWM Amplifier + SMPS



D450ASW2 is a 2-channel class-d power amplifier with on-board switch-mode power supply. D450ASW2 is a versatile and compact solution for many applications in the audio field.

D450ASW is rated at 400W into 4 ohms + 50W into 8 ohms and has several means of protecting the amplifier and the load, overcurrent protection, thermal overload protection, soft-start etc. etc.



D450ASW2 mechanical outline

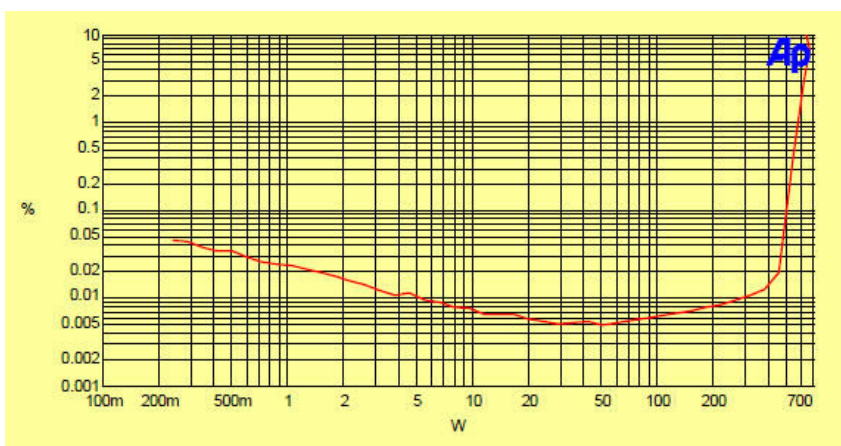
Amplifier specification	
Rated power outputs	400W/ 4 ohms + 50W/8 ohms
Power supply	110 to 240V AC
Aux. Supplies outputs	+15V, -15V . +5V all regulated DC
Freq. Range (+0, -1dB)	22 – 20.000 Hz
THD + N	0.05% typ.
Dynamic Range	110 dB typ.
Max. output current	20A (400w channel)
Min. load impedance	4 ohms
Damping Factor	400 typ.
Input voltage	1V - 40 k
Operation	Class-d amplifier with smps
Peak limiter	yes
Dimensions	250 x 70 x 70 mm
Heatsink	Integrated

D450ASW2 PWM Amplifier + SMPS**Header specifications.**

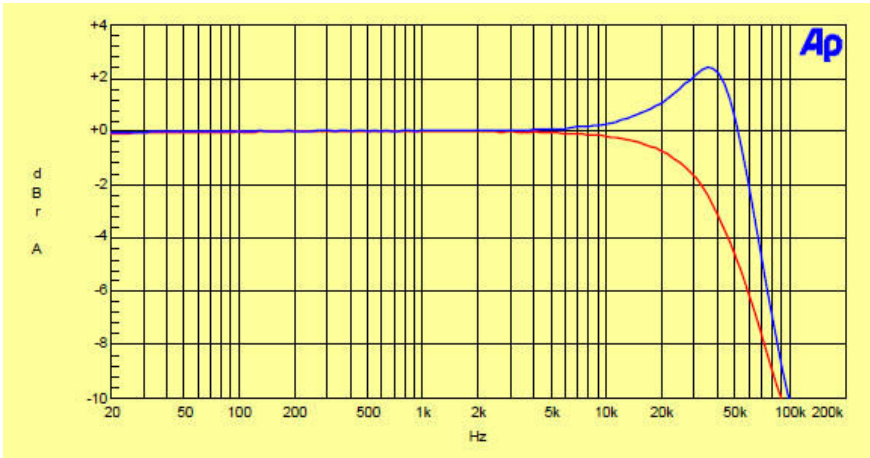
Power Input	P12
1	AC Live
2	AC Neutral

Speaker Outputs	P7
1	+ out CH1
2	- Out CH1
3	+ out CH2
4	- Out CH2

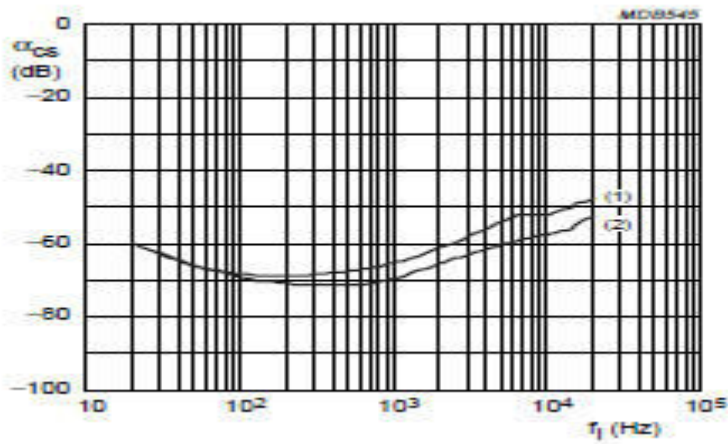
Inputs	P8
1	IN CH1
2	GND
3	IN CH2
4	GND
5	High Temp
6	+15V
7	GND
8	-15V
9	+5V

Performance Graphs**THD vs. Power Output**

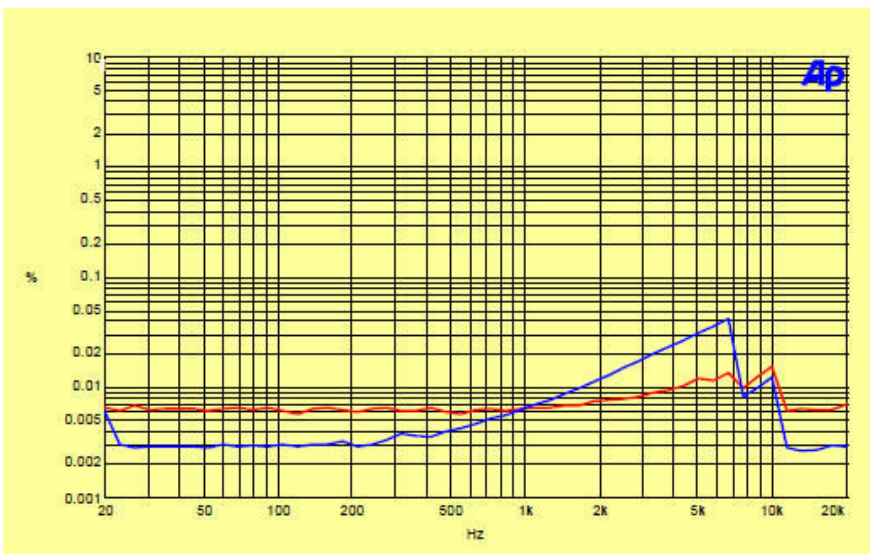
D450ASW2 PWM Amplifier + SMPS



Freq Response (RED) 4 ohms , (BLUE) 8 ohms



Channel separation – 4 ohms



THD + N vs. Frequency