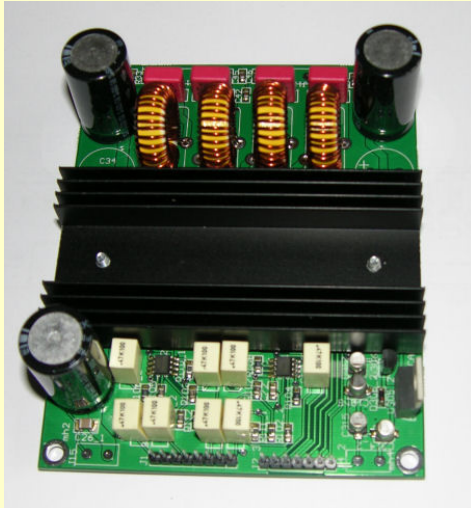




D300S PWM Amplifier



D300S specs

Rated power 4 ohms - 2 ch	2 x 300W
Power supply max.	50V DC
Aux. supply	16V DC
Freq. Range (+0, -1dB)	20 - 20.000 Hz
THD + N	0.02% typ.
Dynamic Range	110 dB typ.
Max. output current	20A
Min. load impedance	4 ohms
Damping Factor	400 typ.
Input voltage	1V - 10 k -
Operation	2 ch Full bridge amplifier
Dimensions	120 x 100 x 40mm
Heatsink	On-board
Available as sample	Yes
Available as OEM design	yes

D300S is a PWM /Class-D amplifier designed to give very high performance in audio quality and to deal with all aspects of amplifier use and applications including amplifier + power supply combination, multichannel use , active crossover use, etc.

Power output is 2 x 300 W into 4 ohms , overcurrent protection is likely to operate with continuous high power levels into 3 ohms or lower.

D300S is a full bandwidth module (20 kHz power bw) and can be used for a broad range of applications from HIFI, Home Cinema to Pro Audio, Active Speakers, Installation... Sound quality is very good indeed and THD + N is 0.02% or better.

The D300S can be powered from a linear supply or from a switch-mode supply .

D300S has these connections:

- * Balanced/unbalanced input header
- * Status header
- * Power inputs
- * Speaker outputs

Connectors;

Power Input – J15

1	GND
2	+50V

Aux power input – J4

1	Gnd
2	+15V

Speaker Output CH1 – J11

1	OUT-
2	OUT+

Speaker Output CH2 –J13

1	OUT-
2	OUT+

Inputs – J1

1	CH1 - IN
2	GND
3	CH1 + IN
4	out
5	CH2 -IN
6	GND
7	out
8	CH2 +IN

Status – J2

1	GND	GND
2	READY	READY
3	/OSW	CLIP
4	/SD	/OSW2
5	OSC-	/OSW1
6	OSC+	/SD
7	/RESET	OSC-
8		OSC+
9		/RESET

