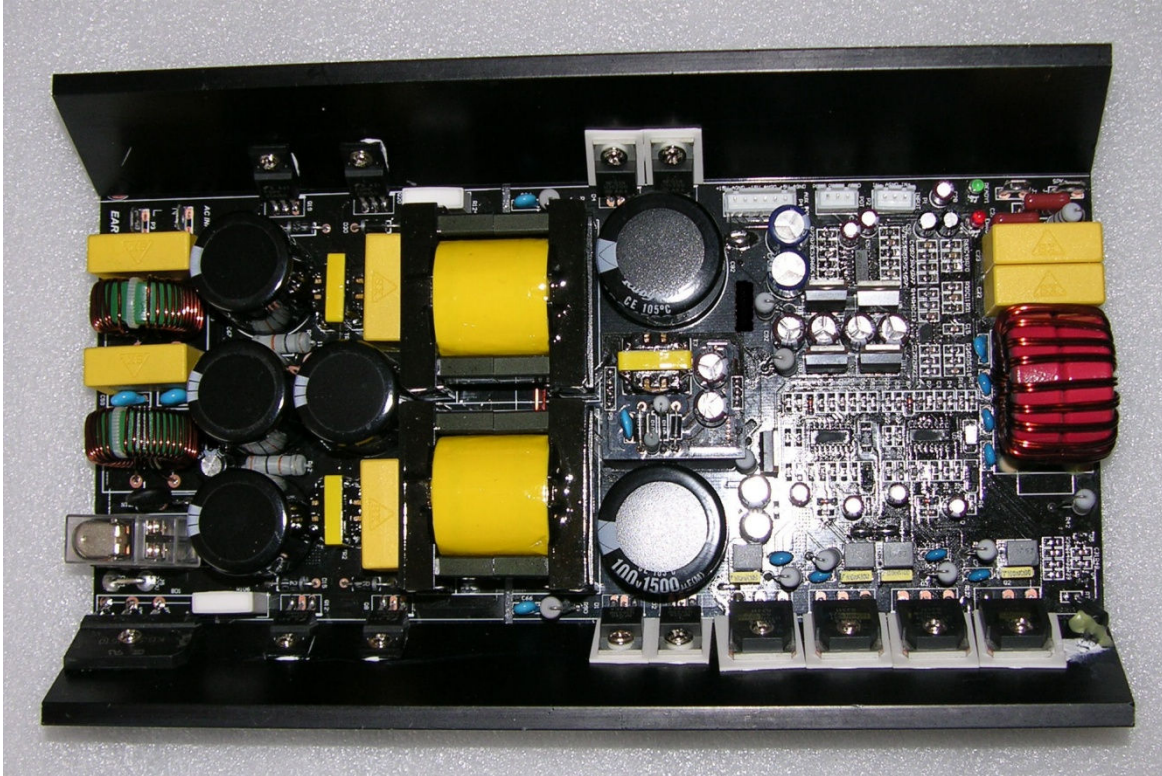


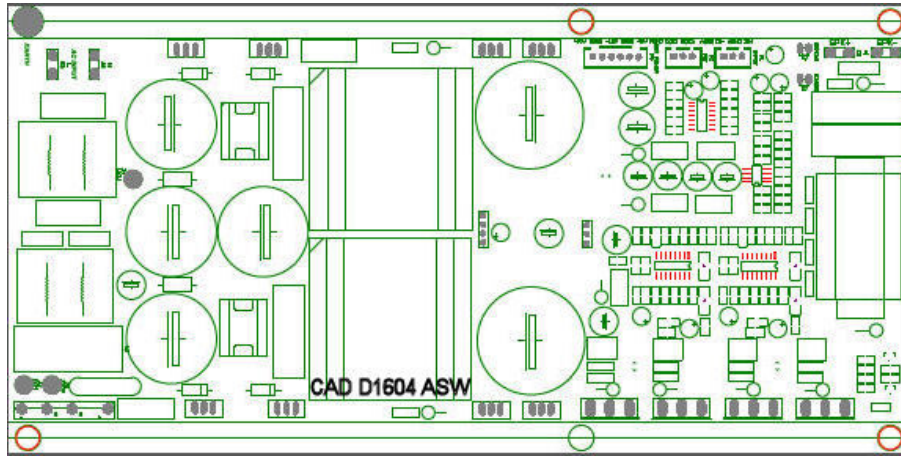
## D2404ASW PWM Amplifier + SMPS



D2404ASW is a class-d power amplifier with on-board switch-mode power supply. D2404ASW is a versatile and compact solution for many applications in the audio field. D2404ASW is rated at 2400W into 4 ohms and has several means of protecting the amplifier and the load, overcurrent protection, thermal overload protection, soft-start etc. etc.

Amplifier specification	
Rated power 4 ohms	2400W
Power supply	110 to 240V AC
Aux. Supplies outputs	+15V, -15V . +5V all regulated DC
Freq. Range (+0, -1dB)	22 – 20.000 Hz
THD + N	0.05% typ.
Dynamic Range	110 dB typ.
Max. output current	45A
Min. load impedance	4 ohms
Damping Factor	400 typ.
Input voltage	1V - 40 k
Operation	1 ch Full bridge amplifier with smps
Peak limiter	Yes
Dimensions	250 x 157 x 41.5mm
Heatsink	Integrated

## D2404ASW PWM Amplifier + SMPS



### Header specifications.

Power Input	P12
1	AC Live
2	AC Neutral

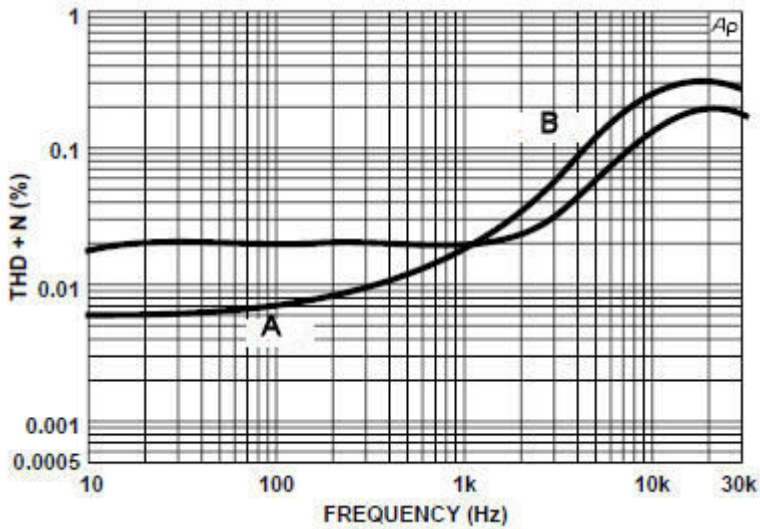
Speaker Outputs	P7
J1	+ out CH1
J2	-Out CH1

Input	P1
1	-IN
2	GND
3	+IN
Volume control	P2
1	GND
2	Wiper
3	Top

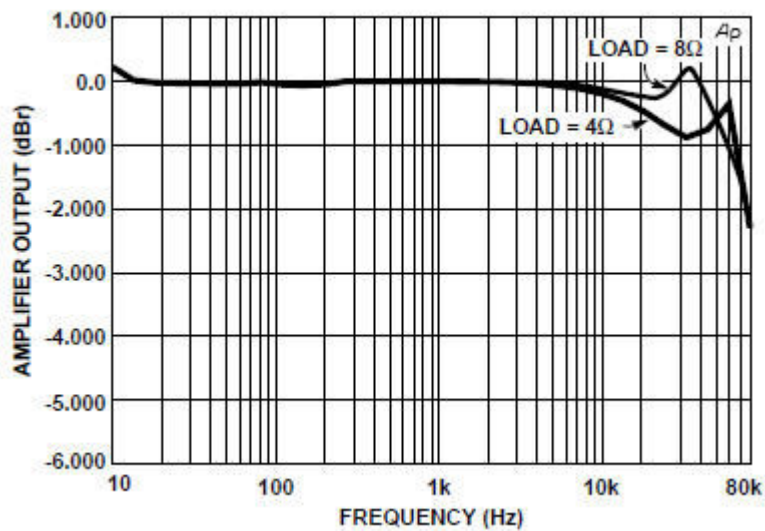
Low voltages	P5
1	+15V
2	GND
3	-15V
4	GND
5	+5V
6	GND

## D2404ASW PWM Amplifier + SMPS

### Performance Graphs



THD vs. Freq – 4 ohms , A = 25W , B = 1250W



Freq Response 8 ohms , 4 ohms ,