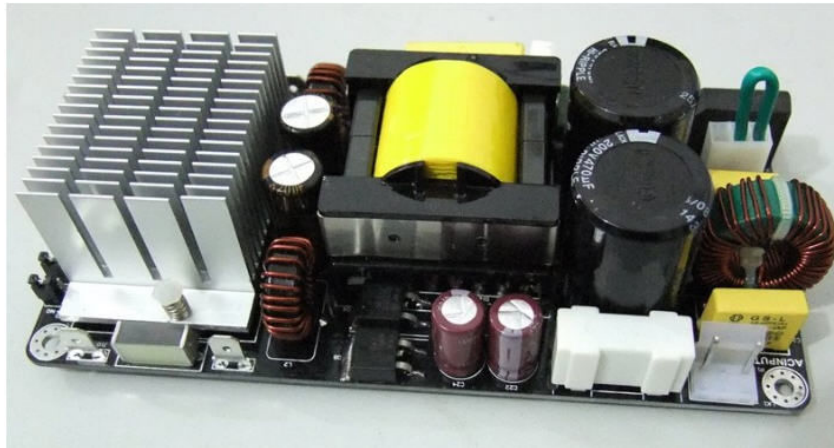
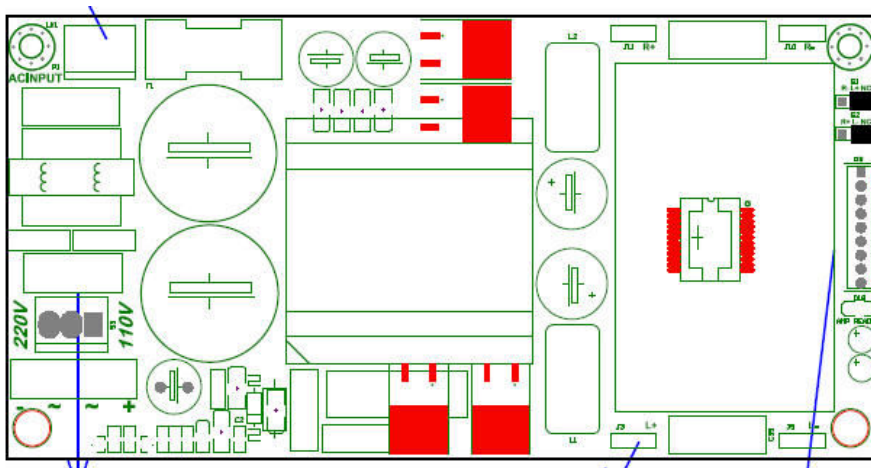


## D175ASW2 PWM Amplifier + SMPS



D175ASW2 is a 2-channel class-d power amplifier with on-board switch-mode power supply. D175ASW2 is a versatile and compact solution for many applications in the audio field. D175ASW2 is rated at 2 x 175W into 4 ohms (1 x 340W BTL into 8 ohms or 1x500W BTL into 4 ohms) and has several means of protecting the amplifier and the load, overcurrent protection, thermal overload protection, soft-start etc. etc.



D175ASW2 mechanical outline

Amplifier specification	
Rated power 4 ohms – 2 ch	2 x 175W
Rated power 8 ohms – mono	1 x 340W
Power supply	110 to 240V AC
Aux. Supplies outputs	+20V, -20V . DC 0.2A
Freq. Range (+0, -1dB)	22 – 20.000 Hz
THD + N	0.05% typ.
Dynamic Range	110 dB typ.
Max. output current	12A
Min. load impedance	2 ohms SE / 4 ohms BTL
Damping Factor	400 typ.
Input voltage	1V - 40 k
Operation	2 ch Half bridge amplifier with smps
Peak limiter	yes
Dimensions	160 x 80 x 45mm
Heatsink	Optional

## D175ASW2 PWM Amplifier + SMPS

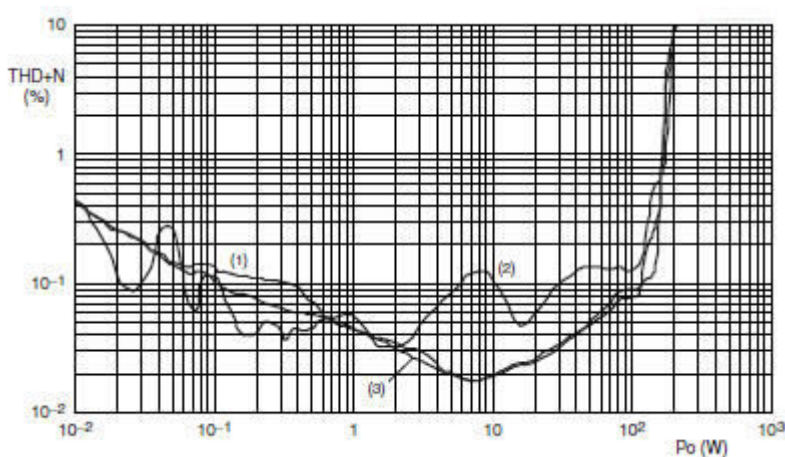
### Header specifications.

Power Input	
1	AC Live
2	AC Neutral

Speaker Outputs	
1	+ R Out
2	-R Out
3	+ L Out
4	+ L Out

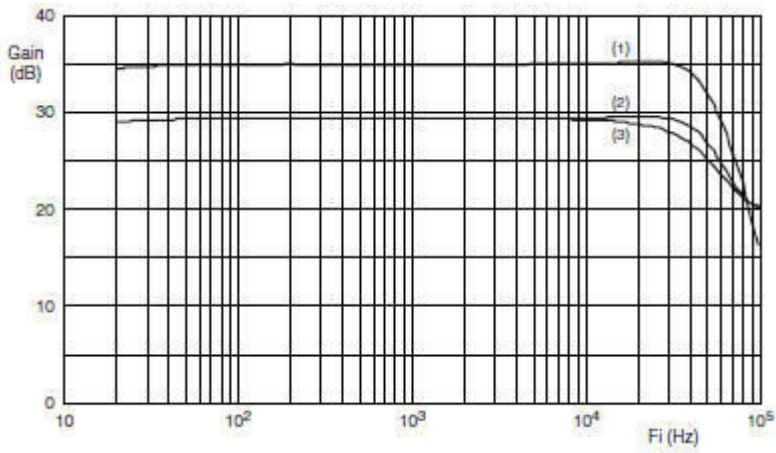
Inputs	
	P2
1	+20V DC
2	-20V DC
3	GND
4	MUTE
5	R+ input
6	R- input
7	GND
8	L+ input
9	L- input

### Performance Graphs

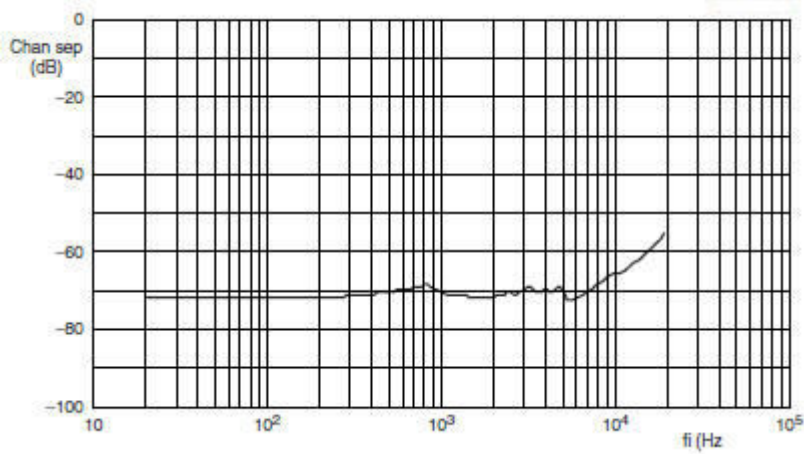


THD vs. Power Output – (1) 1 kHz , (2) 6 kHz , (3) 100 Hz, SE 4 ohms

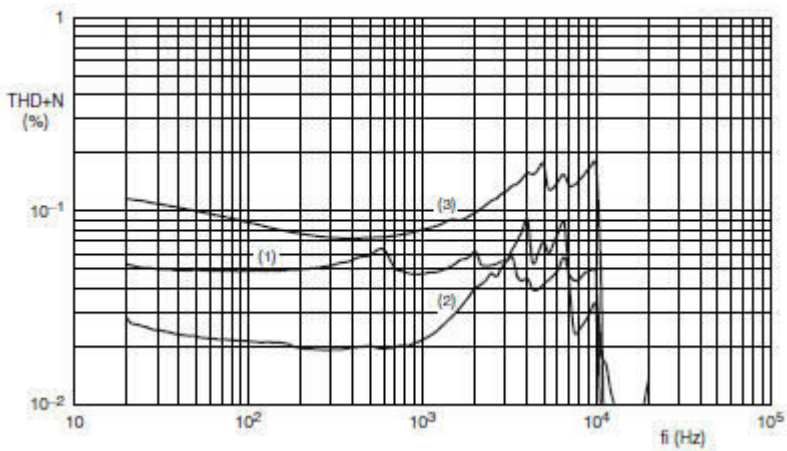
## D175ASW2 PWM Amplifier + SMPS



Freq Response (1) 8 ohms , (2) 4 ohms , (3) 3 ohms



Channel separation – 4 ohms



THD + N vs. Frequency – 4 ohms