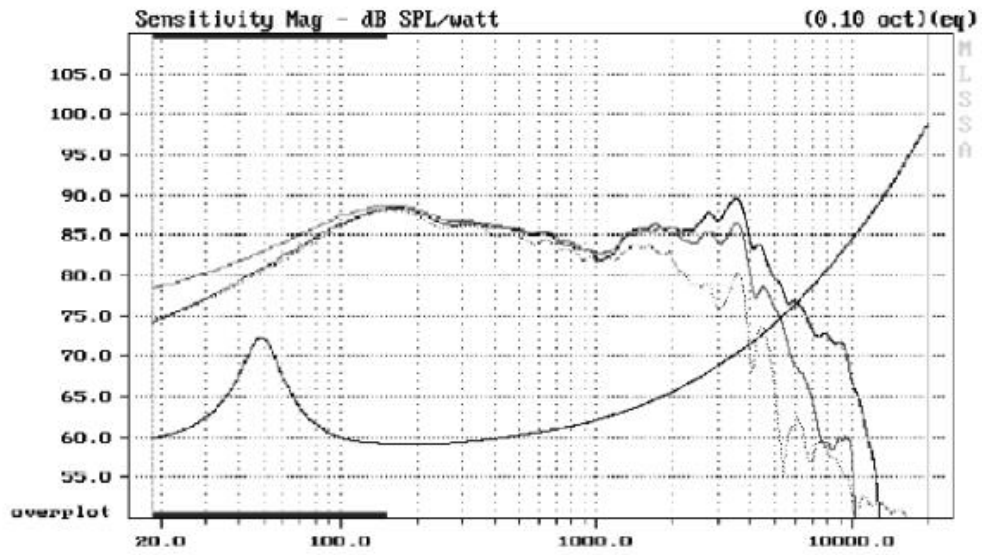




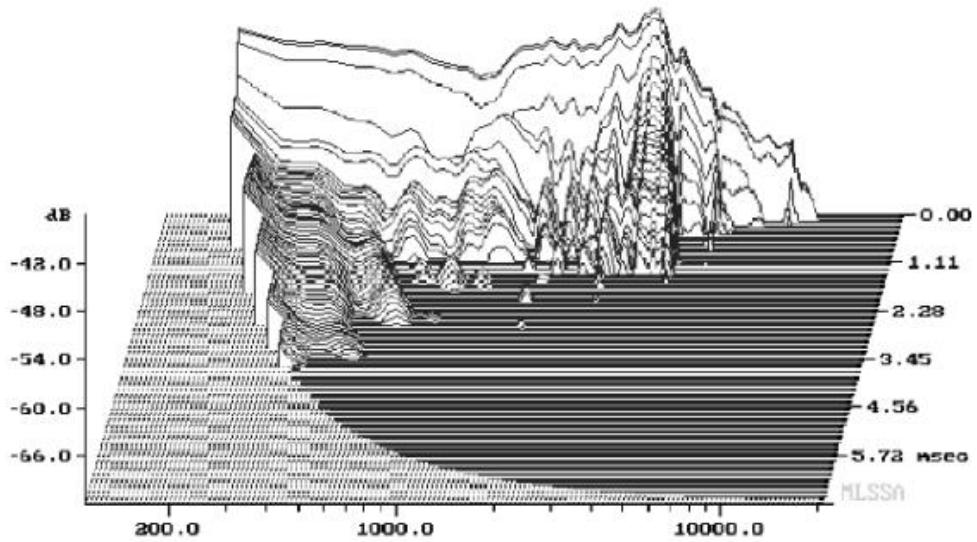
AP170G2

Impedance			25 mm
Fs	6 ohms	V.C. Diameter	11 mm
RMS Power (iec)	48.6 Hz	V.C. Length	aluminum
Sensitivity (2.83V/1m)	45 W	V.C. Former	4
	87.8 dB	V.C. Layers	round
		Wire Type	6.56 NA-1
Re	5.6 ohms	BL	13.83 gr
Le	0.99 mH	Mms	
Xmax	± 3.0 mm		
Qms	2.51	Cone	treated paper
Qes	0.56	Surround	rubber
Qts	0.46	Frame	polymer
Vas	19.15 l	Net Weight	0.93 kg

Response Curves



Spectral Decay Plot



Dimensions in mm

