

6MBX44

LF Drivers - 6.5 Inches

Product Preview - Coming Soon....

400 W continuous program power capacity

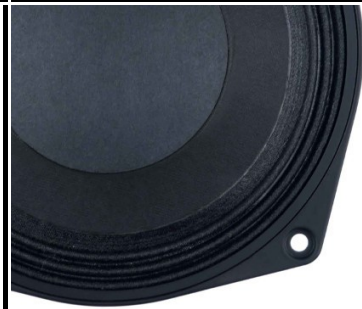
44 mm (1.7 in) aluminium voice coil

90 - 5000 Hz response

98 dB sensitivity

Neodymium magnet allows a very light yet powerful motor assembly

Aluminium ring allows a very low distortion figure



Specifications

Nominal diameter	170 mm (6.5 in)
Nominal impedance	8 Ω
Minimum impedance	6.0 Ω
Nominal power handling ¹	200 W
Continuous power handling ²	400 W
Sensitivity (1W/1m) ³	98.0 dB
Frequency range	90 - 5000 Hz
Voice coil diameter	44 mm (1.7 in)
Winding material	Aluminium
Former material	Glass Fibre
Winding depth	10 mm (0.37 in)
Magnetic gap depth	6 mm (0.25 in)
Flux density	1.55 T

Design

Surround shape	Triple Roll
Cone shape	Exponential
Magnet material	Neodymium Ring

Design

Spider	Single
Pole design	T-Pole
Woofer cone treatment	Hydrophobic Treatment
Recommended enclosure	3.0 dm ³ (0.11 ft ³)
Recommended tuning	120 Hz

Parameters⁴

Fs	90 Hz
Re	5.1 Ω
Qes	0.28
Qms	3.5
Qts	0.27
Vas	5.8 dm ³ (0.2 ft ³)
Sd	132.0 cm ² (20.46 in ²)
η _o	1.4 %
Xmax	3.5 mm
Xvar	4.8 mm
Mms	12 g
Bl	11.7 Txm

Parameters

Le	0.2 mH
EBP	321 Hz

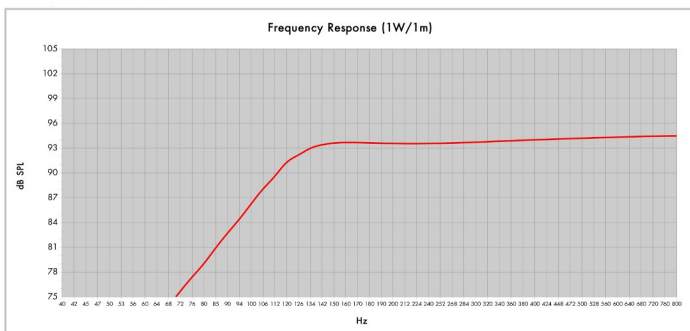
Mounting And Shipping Info

Overall diameter	187 mm (7.36 in)
Bolt circle diameter	172 mm (6.7 in)
Baffle cutout diameter	145.0 mm (5.7 in)
Depth	87 mm (3.43 in)
Flange and gasket thickness	11 mm (0.4 in)
Air volume occupied by driver	0.6 dm ³ (0.02 ft ³)
Net weight	1.5 kg (3.31 lb)
Shipping units	1
Shipping weight	1.75 kg (3.86 lb)
Shipping box	221x214x130 mm (8.7x8.4x5.1 in)

Service Kit

RCK06MBX448

- 2 hours test made with continuous pink noise signal (6 dB crest factor) within the range Fs-10Fs. Power calculated on rated minimum impedance. Loudspeaker in free air.
- Power on Continuous Program is defined as 3 dB greater than the Nominal rating.
- Applied RMS Voltage is set to 2.83 V for 8 ohms Nominal Impedance.
- Thiele-Small parameters are measured after a high level 20 Hz sine wave preconditioning test.



Model:	6MBX44	Configuration:	One Driver
Enclosure Type:	Bass Reflex		
Internal Net Volume (Liters):	3	Q _B :	7
Tuning Frequency (Hz):	120	Port Area (cm ²):	25.0
Frequency (3 dB) (Hz):	123.0	Port length (cm):	12.5
Frequency (10 dB) (Hz):	95.3		